



File Name: Car hauler manual.pdf

Size: 4430 KB

Type: PDF, ePub, eBook

Category: Book

Uploaded: 3 May 2019, 15:15 PM

Rating: 4.6/5 from 636 votes.

Download Now!

Please check the box below to proceed.



I'm not a robot



reCAPTCHA
Privacy - Terms

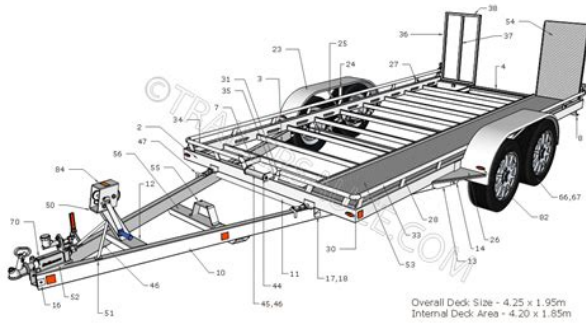
Book Descriptions:

Car hauler manual



Although we began providing a copy of the updated manual with all new equipment back in the Spring, we are now sending a copy in the mail to each Cottrell customer. We want a new manual to be placed in every piece of Cottrell equipment operating today. This manual contains important information and guidance to anyone operating or maintaining Cottrell equipment. As an added bonus, you can download a PDF version of the manual straight from our website under the "Operator's Manual" section on our home page. Please contact Cottrell and let us know how many copies of the Manual you need for your existing equipment. You can now have a safe and secure way of moving anything at anytime to any state. CarryOn Trailer Corporation has provided you with a vehicle designed for many years of troublefree service. These manuals are to help you maintain and tow the trailer safely. Please read and follow all of its warnings and instructions carefully. Each trailer varies from one to the next, so be sure to read and comply with any warnings and information supplied by the manufacturer about your specific model. This will help to obtain peak performance. These updates provide information on how to safely operate and maintain your CarryOn Trailer. Anyone who elects to receive Owner Resources updates will also receive our monthly newsletters. Please note that in the event of a product recall or other similar situations, we may use email to communicate with you and provide you with further updates. Name This field is for validation purposes and should be left unchanged. Download Owners Manual Includes wiring diagrams, maintenance checklists, load distribution guidelines and more. Download Owners Manual Download Owners Manual Glen Lyn, VA 24093. Trailers are manufactured in the order in which customer payments are received. See the color choices The balance will be due when you pick up your finished trailer. Your balance due will equal the total. Capacities from 5,200 to 28,000 pounds. <http://www.restauraceeverest.cz/userfiles/dyson-dc30-instruction-manual.xml>

- **car hauler manual, car hauler manufacturer, car hauler manufacturers in us, car hauler manufacturers georgia, car hauler manufacturer, car hauler manufacturers georgia, car hauler manufacturers in us, car hauler model kit, car hauler models, car hauler mfg, car hauler mi, car hauler meaning.**



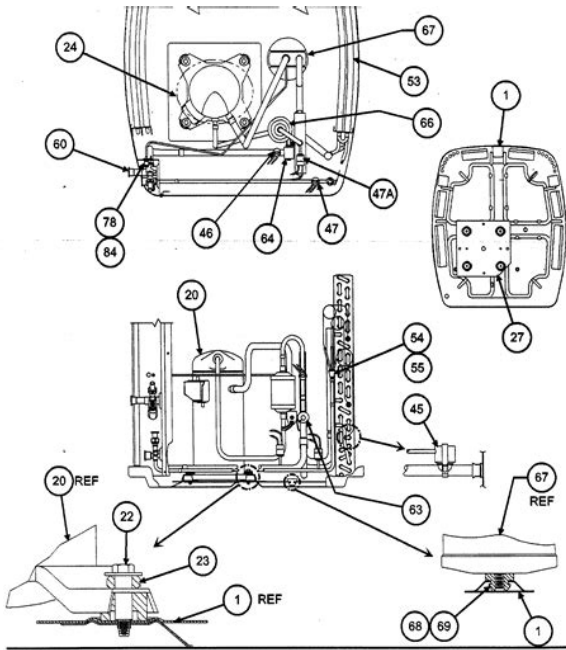
Many have slidein ramps to load equipment. Various lengths, capacities, axles, hydraulic upgrades, and other options. Be sure to review the manual, and keep a copy on hand for your convenient reference. Contact your nearest Featherlite trailer dealer or email Featherlite. If accessing via Internet Explorer, its recommended that you right click on the link and save i.e. Save target as to your computer desktop. Steel Trailers Top 10 Maintenance Tips for Livestock Trailers Bumper Pull Trailers vs. Gooseneck Trailers Buying a New Horse Trailer General Hauling and Loading Tips Importance of Proper Hitching Trailer Warranty. Light, low and capable combined with an extremely attractive value for money price. Brand new operational features include the ability to add a hydraulic tiltbed facility to any model at any time in the future, innovative assistor ramps for ultralow clearance loading and LED lighting as standard. Weve included a few extra neat touches such as the extremely easy ramp storage and location system, number plate mounting brackets and low door clearance, all as standard on all models. Soft links prevent any damage to the wheel rims. Essential for safety and peace of mind that your vehicle is tied down correctly. Easy to fit with multiple builtin tiedown points. Soft links prevent any damage to the wheel rims. Essential for safety and peace of mind that your vehicle is tied down correctly. Easy to fit with multiple builtin tiedown points. Its design places the wheels above average bonnet height, so keeping useful space available on the bed. Safety and security of the transported spare wheels is provided for by a unique strap system and a plastic coated cable with padlock. Its design places the wheels above average bonnet height, so keeping useful space available on the bed. Safety and security of the transported spare wheels is provided for by a unique strap system and a plastic coated cable with padlock. <http://xn--d1annh.xn--p1ai/files/dyson-dc30-manual-pdf.xml>



We cant connect to the server for this app or website at this time. There might be too much traffic or a configuration error. Try again later, or contact the app or website owner. We cant connect to the server for this app or website at this time. There might be too much traffic or a configuration error. Try again later, or contact the app or website owner. Some features may be subject to availability, delays, or discontinuance. Trailers may be shown with optional equipment. Please contact your authorized Diamond C dealer for specific information about product accessories or features. We

have a wide variety of new trailers to fit your needs. From a 3 car hauler to a 10 car stinger, we've got you covered! Our used line of trailers goes all the way from utility trailers to 10 car haulers. Click below to browse our online manual! I can load SUVs, Trucks, and Cars. It allows you the ability to maximize your revenue. I have no regrets with going with WallyMo! I'm able to get 6 on it. Amazing what you can load on this trailer. Best trailer WallyMo Builds! We provide the best customer service with our trailers and provide high quality parts to support them with! We provide the highest quality trailers available on the market and they are each built to withstand whatever you can throw at them. Whether you are shopping for a new or used trailer, big or small, our staff will help you locate a trailer to fit your needs. Whether you are looking for a new trailer or even parts, we're here to help you! We have two locations. Our main branch is located in Holiday, TN and our branch location is in Parsons, TN. Our friendly staff is here to help with all of your trailer and car hauler needs. Whether you are looking for a small 3 car hauler or a 10 car stinger, we have a solution for you to meet your budget! If you have. Learn More. Safety messages alert you to possible hazards and instruct you on how to avoid or reduce the risk of injury.

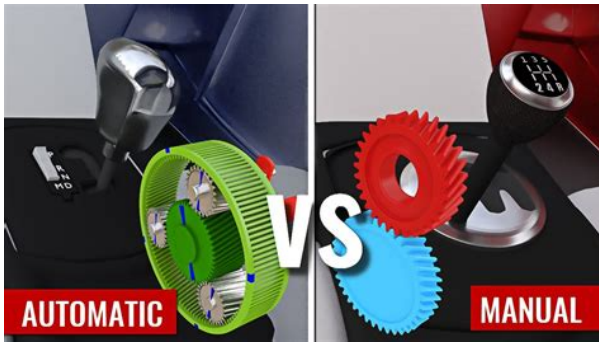
DEATH, DISMEMBERMENT or SERIOUS INJURY to you, your passengers, and others on the road may result if you do not follow these instructions. Make sure all drivers read and understand all these instructions. A UHaul representative can assist if you require assistance. The vehicle in tow must be loaded facing forward on the auto transport AT trailer. Loading the vehicle in tow backwards can cause the tow vehicle and auto transport trailer "combination" to begin WHIPPING, which is violent and uncontrollable sway. If you notice sway beginning SLOW DOWN IMMEDIATELY by letting off the gas pedal. Then stop to reload the vehicle in tow facing forward as soon as possible, and remove any cargo from the vehicle in tow vehicle carried on trailer. Let off the gas pedal and hold the steering wheel in a straightahead position. IF A COMBINATION DISTURBANCE OCCURS, DO NOT steer or brake. Steering or braking during a disturbance can cause a loss of control or crash. Let off the gas pedal and slow down below 25 mph. Then steer gradually back onto the roadway. Proceed with caution entering traffic. This is done during the rental process, so DO NOT place a vehicle in tow on the auto transport that is different than listed on your rental contract, unless UHaul validates the new vehicle in tow for you. Cargo inside the vehicle in tow can cause sway or WHIPPING. Do not exceed the gross vehicle weight rating GVWR and the gross axle weight ratings GAWR, which are posted on a label inside the driver's door opening. Reduce your speed from what you would normally drive without a trailer under similar road conditions. The maximum speed is 55 mph when towing a UHaul auto transport trailer. Do not exceed any posted speed limit. DO NOT RIDE BRAKES on downgrades. Be sure all tires are inflated properly. Be sure children are properly restrained. Avoid driving at night. If you need to use a cell phone find a safe place to exit the roadway. Never use a tow vehicle different than listed on your rental contract.



<https://www.becompta.be/emploi/bosch-psb-500-re-manual>

These changes can include different tires, suspension changes, etc. Check your owner's manual or with an authorized automotive dealer to make sure any changes to your tow vehicle are approved. DO NOT tow the auto transport trailer if your tow vehicle has changes that are not approved. Follow the vehicle manufacturer's instructions. Have an authorized repair facility inspect and repair your vehicle BEFORE towing. A UHaul representative can advise you on the type of hitch required for your intended use. A UHaul representative can advise you on the correct ball size and weight rating for the auto transport trailer. Towing a properly loaded auto transport trailer does not require these devices. These devices may have a negative effect on vehicle handling and braking and may restrict the operation of the trailer coupling mechanism. Your tow vehicle may require external mirrors on both sides. A UHaul representative can advise you of the systems available if your vehicle is not properly equipped. Contact a UHaul representative for help in finding the curb weight of your tow vehicle. This weight includes driver, passengers, cargo and any additional equipment. If the rear of your tow vehicle seems low, reduce the load in the rear seat, trunk or cargo bed areas. Too much load in the rear can affect handling. Find the recommended COLD pressure on the tire sidewall, owner's manual, your vehicle's door decal or on the auto transport trailer decal. DO NOT put more pressure in the tire than is indicated on the tire sidewall. Tire pressures go up during driving. DO NOT let off this extra pressure. Inflate rear tires approximately 6 psi above normal, but do not exceed the pressure limit stamped on tire. This is done during the rental process, so DO NOT place a vehicleintow on the auto transport that is different than listed on your rental contract. If you need to change your tow vehicle or vehicleintow, contact UHaul to validate the new vehicles and update your contract.

<http://instalaciones-martinez.com/images/c5580-service-manual.pdf>



Exceeding these limits may cause a disturbance or damage to your tow vehicle, auto transport or vehicleintow. Tires on some narrow track width vehicles may extend slightly past the inside edge of the ramps, be sure the vehicle is centered carefully to stay on the ramps and platform. over the sides. Make sure there is enough clearance for these items. If there is not enough clearance for these items, they must be removed or do not load the vehicleintow. Special instructions are offered on uhaul.com for loading vehicles with low ground clearance, by using wood boards or other means and some extra effort. Modifie d or lowered suspension vehicles may not fit on the auto transport trailer, damage may occur to the vehicles during loading or transport. UHaul is not responsible for damage to vehicles with modified suspensions. A UHaul representative can assist you if you require assistance. Do not allow yourself to become distracted. Ensure that the coupler is properly fastened to the hitchball before moving to the next step. The coupler should completely cover and enclose the hitchball A. At least 10 complete revolutions of the handwheel are necessary. Recheck that the handwheel is tight. Make sure the hitch and hitchball are securely attached to your tow vehicle and that the trailer coupler is properly connected to the hitchball. Use the checklist at the end of these instructions. If you suspect or detect that something is wrong, contact the nearest UHaul representative. Safety chains are attached to the auto transport trailer tongue and are equipped with "S"hooks on their free ends. DO NOT tow the auto transport trailer without the safety chains securely attached to the towing vehicle. DO NOT attempt to pull the auto transport trailer by the safety chains alone, unless this is necessary to get the combination off the roadway to a safe place. Do not attach chains to the ball or to a ball mount that is removable. The right chain hooks to the left side in the same manner.

<https://institutolagranja.com/images/c5500-repair-manual.pdf>



The "S"hooks D can be placed through a link in the chain. Crossing the chains under the tongue allows the minimum amount of slack for turning. Control slack by hooking the chain back to itself or by twisting the links to shorten chain. Be sure the "S"hooks are secured with a rubber retainer. D. Make sure these chains attach securely to your tow vehicle and do not drag on the roadway. This

chain applies the brakes automatically in the unlikely event of a separation of the trailer from the tow vehicle. Attach this chain as close to the vehicle center as possible; to the tow vehicle permanent hitch, frame or structure, or to the bumper brackets. Twist chain to take up most of the slack and secure "S"hook with rubber retainer. Some slack is necessary to prevent the emergency brake from activating on turns or inclined driveways. The connecting wires need slack to allow your tow vehicle to make turns. Do not allow wires to drag on the roadway. If your tow vehicle does not have a 4way flat lighting connection system, your UHaul representative will be able to instruct you on the connection steps and products available for your vehicle. Failure to load facing forward may result in sway or WHIPPING and lead to total loss of control. Loading cargo in your vehicleintow or on your auto transport trailer may result in sway or WHIPPING. UHaul will validate your intended use and provide special instructions if you intend to do this. Be sure to load trailer heavier in front and to secure the load. Turn the coupler handwheel clockwise. Make sure the safety chains are properly connected. During the loading process, keep children and others at least 25 feet away. Pull on the ratchet release and raise the handle as far up as you can. Pull the tire strap out of the ratchet spool. Lay the strap over the outside of the auto transport trailer. Free the strap on the other side in the same manner. Failure to load facing forward may result in sway or WHIPPING.

Make sure there is enough clearance for spoilers, air dams, etc. If more clearance is needed, lift the front of the auto transport trailer using the tongue jack. DO NOT unhook the auto transport trailer from the tow vehicle if the tongue jack is needed. Drive slowly toward the front of the auto transport trailer. Keep driving forward until the tires contact the tire stops. DO NOT brake quickly or ram the tire stops at the front of the auto transport trailer. Set the PARKING BRAKE. The fenders are not designed to carry the weight of a person. Loss of balance or the fenders breaking may result in serious injury. Carefully step off the auto transport trailer, using the step provided if necessary. Rotate the left fender up and latch both ends. This may result in a combination disturbance, a vehicle crash or damage to your vehicleintow. Place the tire straps over the tires. Pull about 6 inches of the tire strap through the ratchet spool. Keeping the strap evenly over the tire, operate the ratchet until the tire strap is tight. Your vehicleintow tires are too big if 6 inches of the tire strap will not pull through the ratchet spool. If the tires are too big, a UHaul outlet can provide you with special automotive tie down straps. Special instructions are offered on uhaul.com for securing the vehicleintow when the tire straps are not used, or ask a UHaul representative for these instructions, or follow instructions provided with the automotive tie down straps. DO NOT tow without vehicleintow properly secured. After tightening the straps, push the handles down and completely rearward. Keep the security chain away from brake and fuel lines and other items that may be damaged by the chain. DO NOT place the chain hook on the vehicle's frame member or other structural member. Loop the chain around the member and place the hook through the hole in one of the chain links. Leave a few inches of slack in the security chain. Be sure the "S"hook is secured with a rubber retainer.

<http://adanateknikservis.web.tr/wp-content/plugins/formcraft/file-upload/server/content/files/16272d6aa7f40b---bridge-superstructure-design-manual.pdf>

Make sure the latches hold the ramps securely in place. Do not feel secure because your auto transport trailer tows easily at higher speeds. A road hazard that could be avoided at 55 mph, may become unavoidable at a higher speed. Excessive speed is a major cause of accidents. This means it will take you longer to stop. Start counting when the back of the vehicle in front of you passes a fixed object, such as a line or crack in the road. If the front of your vehicle reaches the object before the end of the 4 seconds, increase your distance. Persistent side to side sway motion is not normal. If this occurs at a certain speed, it is a signal that WHIPPING will likely occur if speed is increased by a small amount. If you notice this behavior immediately slow down and maintain at least 10 mph below the speed this sway was first noticed. Then stop at the first opportunity and reload the

vehicleintow facing forward and remove any cargo from the vehicleintow. NEVER speed up to try to control a combination disturbance. DO NOT try to control the combination disturbance by turning the steering wheel. Get all occupants out of the vehicle and away from the roadway. Also make sure there is no cargo in the vehicleintow and the front end is loaded to the FRONT of the auto transport trailer. Combination disturbances happen most often at higher speeds. If the combination disturbance still occurs, something is wrong with your tow vehicle. See the combination disturbances section on what to do if a combination disturbance happens. Shift into lower gear and let off the gas pedal, this allows the engine to help you control your speed. Combination disturbances happen more frequently going downhill and at higher speeds. Prolonged use of your brakes results in overheating and possible loss of braking. When you need to slow down, apply the brake pedal and slow down below the intended speed. Then let off the brake pedal completely. Repeat as needed.

agrobrasil.com/userfiles/files/canon-powershot-s1-is-repair-manual.pdf

This will improve gas mileage and reduce engine overheating. Then steer gradually back on the roadway. Proceed with caution entering traffic. Allow for this by driving in the center of your lane. Because the combination is longer the trailer will track inside the turn and may sideswipe a vehicle or object. Drive slightly past the corner before turning or turn wider than you would with a car to avoid this. Or simply plan ahead and avoid sharp turns where you can. To move the auto transport trailer left, move your hand left. To move the auto transport trailer right, move your hand right. If your combination starts to jackknife, or isn't headed where you want it, STOP. Pull forward to straighten out, then start again. If you cannot get help, exit your vehicle and make sure there are no people or obstructions in the way. Turn the coupler handwheel clockwise. Make sure the safety chains are properly connected. Place the combination on level ground. Make sure the auto transport trailer is directly behind the tow vehicle, in a straight line. Set the tow vehicle's PARKING BRAKE firmly and turn the motor off. Allow room behind the auto transport trailer to back the vehicleintow clear of the auto transport trailer. DO NOT unhook the auto transport trailer from the tow vehicle if use of the tongue jack is needed. Free the tire straps from the ratchets and lay them over the sides of the auto transport trailer. Release the parking brake on the vehicleintow. Leave all doors closed during the unloading process. Make sure the latches hold the ramps securely in place. Remove as much slack as possible. Turn on your emergency flashers. Get all occupants out of the vehicle and away from the roadway. Drive slowly. Be prepared to give your exact location and a callback telephone number. Have your contract with you when you call. They will have a UHaul representative contact you and do whatever is necessary. Call an ambulance if anyone is injured.

Notify the police as soon as possible and then report the accident at myuhaul.com or call Roadside Assistance at 18005280355. Your opinions and feedback are very important to us. Please help us with a review of your recent experience. All rights reserved. We cant connect to the server for this app or website at this time. There might be too much traffic or a configuration error. Try again later, or contact the app or website owner. We cant connect to the server for this app or website at this time. There might be too much traffic or a configuration error. Try again later, or contact the app or website owner. We cant connect to the server for this app or website at this time. There might be too much traffic or a configuration error. Try again later, or contact the app or website owner. We cant connect to the server for this app or website at this time. There might be too much traffic or a configuration error. Try again later, or contact the app or website owner. They have applied this knowhow to creating transport trailers for recreational and business use. In fact, Sundowner's cargo trailers, utility trailers, car haulers including the most popular Xtra Series Transporter and the ProGrade Toy Haulers all reflect this commitment to innovation. Their commitment to responding to change in a positive, proactive manner has remained strong and kept them at the forefront of innovation and design. Today more than ever Sundowner is... America's Trailer. We cant connect to

the server for this app or website at this time. There might be too much traffic or a configuration error. Try again later, or contact the app or website owner. All features and specifications are subject to change without notice. Availability subject to dealer stock and factory. Owners are responsible for the proper selection and use of tow vehicles. Consult your vehicles manual for towing capacity details. Failure to do so may lead to damage to your vehicle, trailer, or others.

In order to view you will need to download and install Adobe's free Acrobat Reader. To request a physical copy, please complete and submit the form below. The airbag suspension gives the trailer a smooth ride and allows it to drop the frame to the ground for loading, eliminating the need for ramps. The airbag suspension gives the trailer a smooth ride and allows it to drop the frame to the ground for loading, eliminating the need for ramps. Maxxd is a family owned and operated business. We have now been trusted by thousands with over 70,000 trailers built. All our trailers receive primer standard, and we take more steps in the preparation process for ultimate paint durability. Loading your vehicle has never. That's why, everything you need to know about your enclosed cargo trailer is right here in this downloadable PDF. Following these simple instructions will help maintain proper operation of electrical systems, wheels, bearings, hitches, and other important function devices on your trailer. Should you have a problem, a Pace representative will review your warranty and take action to correct the problem immediately. All rights reserved. We cant connect to the server for this app or website at this time. There might be too much traffic or a configuration error. Try again later, or contact the app or website owner.

<http://www.raumboerse-luzern.ch/mieten/bosch-psb-500-re-manual>