



File Name: D4Dmx Manual.pdf

Size: 4800 KB

Type: PDF, ePub, eBook

Category: Book

Uploaded: 27 May 2019, 19:34 PM

Rating: 4.6/5 from 647 votes.

Status: AVAILABLE

Last checked: 4 Minutes ago!

In order to read or download D4Dmx Manual ebook, you need to create a FREE account.

[**Download Now!**](#)

eBook includes PDF, ePub and Kindle version

[Register a free 1 month Trial Account.](#)

[Download as many books as you like \(Personal use\)](#)

[Cancel the membership at any time if not satisfied.](#)

[Join Over 80000 Happy Readers](#)

Book Descriptions:

We have made it easy for you to find a PDF Ebooks without any digging. And by having access to our ebooks online or by storing it on your computer, you have convenient answers with D4Dmx Manual . To get started finding D4Dmx Manual , you are right to find our website which has a comprehensive collection of manuals listed.

Our library is the biggest of these that have literally hundreds of thousands of different products represented.



Book Descriptions:

D4Dmx Manual



Click Here Its sturdy metal chassis makes this rugged pack ideal for both stationary and portable applications. In addition to multichannel DMX and Microplex dimming control, these units can also provide a standalone chaser function with 16 preprogrammed patterns. Our payment security system encrypts your information during transmission. We don't share your credit card details with thirdparty sellers, and we don't sell your information to others. To hide it, choose Ship in Amazon packaging at checkout. Our technicians use the latest authorized manufacturer tools to help you troubleshoot issues. To access this option, go to Your Orders and choose Get product support. Please try again. Please try again. In order to navigate out of this carousel please use your heading shortcut key to navigate to the next or previous heading. Full content visible, double tap to read brief content. Please try your search again later. The sturdy metal chassis makes this rugged pack ideal for both stationary and portable applications. Leviton D4DMXMD5 Programmable Dimmer Pack At a Glance Microplex and DMX15 protocol functionality in one compact dimming unit Available with DMX on 3pin or 5pin XLR receptacles Onebutton setup of digital DMX addressing via a userfriendly LED panel Sturdy metal chassis make this a rugged pack ideal for stationery and portable applications It boasts the latest convenience features Resettable circuit breakers in lieu of fuses and onebutton setup of digital DMX addressing via a userfriendly LED panel, eliminating dipswitch settings. Its sturdy metal chassis makes this rugged pack ideal for both stationary and portable applications. <http://futbolfilms.com/userfiles/bt-versatility-system-programming-manual.xml>

- **d4dmx manual, d4dmx-md5 manual, d4dmx-md3 manual, 1.0, d4dmx manual, d4dmx-**

md5 manual, d4dmx-md3 manual.

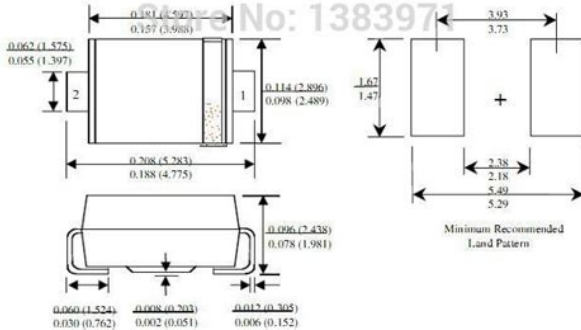
Total Diz Artroplastisi Sonrası Rehabilitasyon

- Operasyon sonrasında:
 - Diz eklemi ekstansiyon pozisyonunda immobilize edilir ve bir kompresyon bandajı ile sarılır
 - Ağrı ve kanamayı azaltmak amacıyla lokal soğuk uygulama yapılabilir
 - Ameliyat sonrası ilk günden itibaren eklem hareket açıklığı egzersizlerine başlanır

Merchant Video Videos for related products 347 Click to play video Treatlife Smart Dimmer Switch Compatible with Alexa, Google Assistant and IFTTT Treatlife Official Next page Upload your video Video Customer Review How to install Lumary smart wifi dimmer switch See full review Lumary Electrical Onsite Associates Program To calculate the overall star rating and percentage breakdown by star, we don't use a simple average. Instead, our system considers things like how recent a review is and if the reviewer bought the item on Amazon. It also analyzes reviews to verify trustworthiness. Please try again later. Beth Munday 3.0 out of 5 stars Whenever power flickers, it seems to forget a bunch of settings which the others dont do. Takes lots of button mashing each time. Even well within wattage specs, both units locked themselves to 100% and stopped responding to DMX at random intervals. Only a powercycle of each unit would return the logic board to normal operation. The digital readout on each unit would flickering random characters and would only show numbers again if we hit the unit. hard. Something is wrong with the design of these units. Dont waste your time. Only real complaint is that the lock feature in the menu isnt retained when power is turned off, so it returns to unlocked when powered up again. Wouldnt be so much of a problem, except that hitting the wrong button in an unlocked state will change the DMX addresses. Not a good thing in the middle of a performance. Hasnt happened to me yet, probably because I try to keep them out of easy reach. But someday. Easy to program and works perfectly. Doesnt matter where in the chain I put it, or which device is next, whatever it is gets bad data. Had to run a separate universe for just the Leviton dimmers, which is silly. Hook it up and it doesnt work. One of the worst kinds of errors to have in a unit that you depend on. Would not buy again. <http://ativn.com/upload/bt-tm15-manual.xml>



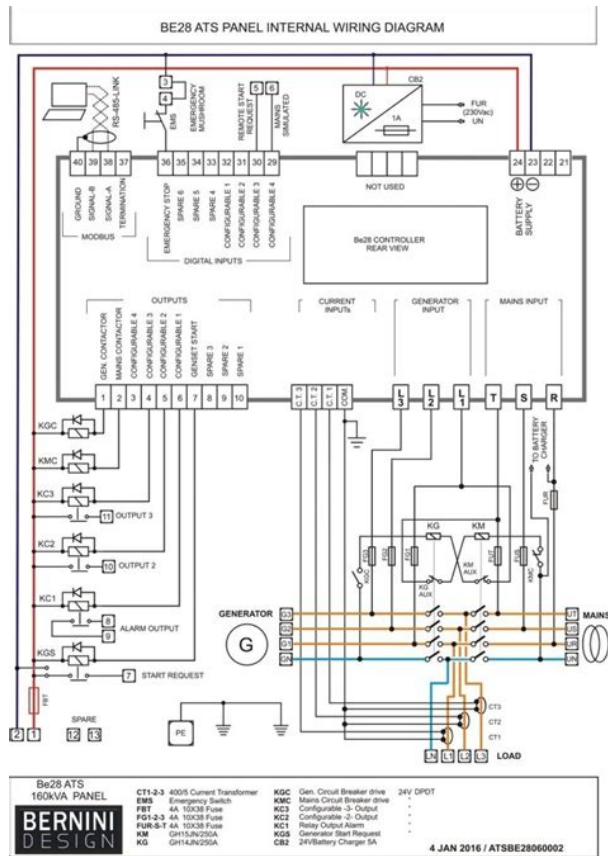
Scale 1:1 on letter size paper
Dimensions shown below are in:
Inches (millimeters)
Part Weight per unit (gram): 0.064



I own many of these leviton satellite dimmers, and I have not had this issue with any of the 5 pin versions.maybe just a coincidence but worth noting.Sorry, we failed to record your vote. Please try again Sorry, we failed to record your vote. Please try again In order to navigate out of this carousel please use your heading shortcut key to navigate to the next or previous heading. To access this option, go to Your Orders and choose Get product support.Please try again.Please try again.Show details. Sold by DMX Pro Sales and ships from Amazon Fulfillment. In order to navigate out of this carousel please use your heading shortcut key to navigate to the next or previous heading. In order to navigate out of this carousel please use your heading shortcut key to navigate to the next or previous heading. Please try your search again later.Leveraging more than a century of experience, Leviton helps customers create sustainable, intelligent environments through its electrical wiring devices, network and data center connectivity solutions, lighting energy management systems, and security and automation applications. From switches and receptacles, and daylight harvesting controls to networking systems, intelligent safety controls, and equipment for charging electric vehicles, Leviton solutions help customers achieve savings in energy, time and cost, all while enhancing safety.Leviton's heritage provides a strong foundation for meeting and exceeding market expectations by bringing continuous innovation to our industry.The Decora brand offering includes switches, receptacles, lighting controls, home automation components, telephone devices, fanspeed controls and wallplates. All Decora devices are provided in a broad range of colors to match or contrast with any decor.The Renu collection includes colorful switches, dimmers and outlets with colorful wall plates you can update yourself whenever youre ready for a new look.

Leviton systems may be installed in new or existing structures and controlled via your smartphone or tablet.It boasts the latest convenience features Resettable circuit breakers in lieu of fuses and onebutton setup of digital DMX addressing via a userfriendly LED panel, eliminating dipswitch settings. Its sturdy metal chassis makes this rugged pack ideal for both stationary and portable applications.Click here to make a request to customer service.Merchant Video Videos for related products 347 Click to play video Treatlife Smart Dimmer Switch Compatible with Alexa, Google Assistant and IFTTT Treatlife Official Next page Upload your video Video Customer Review How to install Lumary smart wifi dimmer switch See full review Lumary Electrical Onsite Associates Program To calculate the overall star rating and percentage breakdown by star, we don't use a simple average. Please try again. Call us 5182513302 This page requires Javascript. Modify your browsers settings to allow Javascript to execute. See your browsers documentation for specific instructions. Are you sure you want to switch accounts Its sturdy metal chassis makes this rugged pack ideal for both stationary and portable applications. It comes with a D4DMX 4channel digital dimmer, which accepts up to 1200 watts per channel and 2400 watts maximum power. Also included

is the N3004 Control Console, an ideal mate to the D4DMX, providing four dimming control channels, a 4scene recordable memory and numerous chaser functions including Channel and Scene Chase, Speed and Direction Control and Audio Input. The N3004 has a master output fader and each channel has a bump button. The four Par 56s are black, rugged PAR fixtures that accept flood or spot lamps. 500watt flood lamps are included. Also included is a 7 2.1 m stand with crossbar for mounting the fixtures, color frames, and gels.

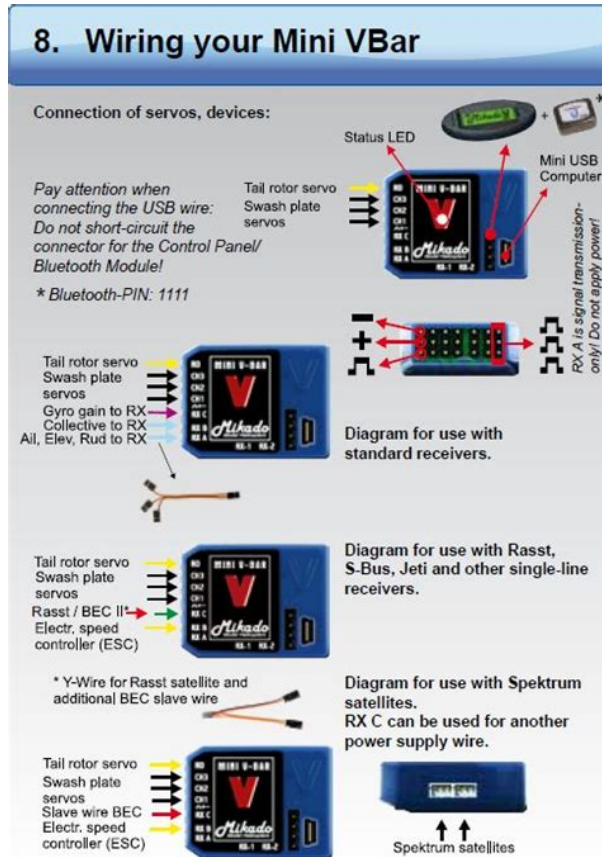


<http://eco-region31.ru/bose-ps48-subwoofer-manual>

PAR 56 Fixtures UL Listed Rigid, rolled edge frame Includes frame at no extra cost N3004 DMX Control Console DMX512 output 4 dimming control channels 4scene recordable memory Chase Functions 2 Userselectable Chases, Channel Chase, Scene Chase, Speed Control, Direction Control, Audio Input Bump buttons for each channel or scene Master output fader D4DMX Dimming Pack Microplex and DMX512 protocols Let us know YOUR RECENTLY VIEWED ITEMS Browsing History ON Clear History Not responsible for typographical or illustrative errors. Noncontact pickup remains available for customers who place their order online, by email, or by phone. Need more It usually takes us 1 3 weeks to bring more in. It boasts the latest convenience features Resettable circuit breakers in lieu of fuses and onebutton setup of digital DMX addressing via a userfriendly LED panel, eliminating dipswitch settings. Its sturdy metal chassis makes this rugged pack ideal for both stationary and portable applications. In addition to multichannel DMX and Microplex dimming control, these units can also provide a standalone chaser function with 16 preprogrammed patterns. Quotes can still be requested, and are usually updated within a few days. You must have JavaScript enabled in your browser to utilize the functionality of this website. Simple pushbutton DMX addressing. Bright LED display for easy menudriven programming. Versatile output channel selector lets you chose the exact number of channels you need. 16 Preprogrammed chase patterns with chase output level controls. 4 channels. Input 120V 60Hz 2400W. Output 120V 60Hz 1200W per channel 2400W Maximum. Builtin mounting bracket. Rugged metal protective chassis. Use single

quotes for phrases. Please, log in or register Sign up for newsletter today. Explore 0 Description Bright LED display for easy, menu-driven programming. Versatile output channel selector lets you choose the exact number of channels you need.

<http://moskewicz.com/images/Dell-Multifunction-Laser-Printer-1815Dn-Manual.pdf>



Clear operation instructions printed on back of unit for ease of use. Available with DMX on 3pin D4DMXMD3 or 5pin D4DMXMD5 XLR receptacles. Imported from USA. Size5Pin DMXLeviton 4channel Programmable D4DMX Dimmer PackIn addition to multichannel. DMX and Microplex dimming control, these units can also provide a versatile unit ideal for. Advanced FeaturesWhats in the BoxInsert Alt Text here . Leviton D4DMXMD5 Programmable Dimmer PackLED panelFrom the ManufacturerIt boasts theIn addition to multichannel. DMX and Microplex dimming control, these units can also provide aDMX, and NSI Microplex, operates as 1, 2, or 4 channel with. Amp Power Supply Cord, 120V. Wed love to help you out. D4DMX D4DMX side view Page 2 Dimensional Data Ordering Informati Thank you, for helping us keep this platform clean. The editors will have a look at it as soon as possible. Weve been mixing on digital for 20 years and have used all the major manufacturers. Give us a call and well help you decide what console meets your specific needs. Open MonFri 10a6p temporarily closed Saturdays We are temporarily halting our Saturday hours. Closed Sundays as always. Please call so we can do the most to help you with the least inperson contact possible. You must have JavaScript enabled in your browser to utilize the functionality of this website. It boasts the latest convenience features Resettable circuit breakers in lieu of fuses and onebutton setup of digital DMX addressing via a userfriendly LED panel, eliminating dipswitch settings. In addition to multichannel DMX and Microplex dimming control, these units can also provide a standalone chaser function with 16 preprogrammed patterns. Use single quotes for phrases. Please contact our showroom for more information. Please contact our showroom for more information. To comply with the new ePrivacy directive, you agree to the privacy policy and our use

of cookies.

<http://asyasunger.com/images/Dell-Mp3300-Manual.pdf>



Its sturdy metal chassis makes this rugged pack ideal for both stationary and portable applications. Input 120V, 60Hz 15A Edison Plug Output 120V, 60Hz, 1200W per channel, 2400W Maximum Builtin mounting bracket Housed in rugged metal protective chassis Shipping weight 9 lbs. Learn more opens in a new window or tab Read item description or contact seller for postage options. This amount is subject to change until you make payment. For additional information, see the Global Shipping Programme terms and conditions opens in a new window or tab This amount is subject to change until you make payment. If you reside in an EU member state besides UK, import VAT on this purchase is not recoverable. For additional information, see the Global Shipping Programme terms and conditions opens in a new window or tab Learn More opens in a new window or tab Learn More opens in a new window or tab Learn More opens in a new window or tab Learn More opens in a new window or tab Learn More opens in a new window or tab See the sellers listing for full details. Contact the seller opens in a new window or tab and request a postage method to your location. Please enter a valid postcode. Please enter a number less than or equal to 7. You're covered by the eBay Money Back Guarantee if you receive an item that is not as described in the listing. Find out more about your rights as a buyer opens in a new window or tab and exceptions opens in a new window or tab. All Rights Reserved. User Agreement, Privacy, Cookies and AdChoice Norton Secured powered by Verisign. Orders will be processed and dispatched within 24 hours after payment is clear. For parts or if you like to fix things. Leviton D4DMXMD3 4Ch. Programmable Dimmer Integrating StandAlone, 3Pin DMX NO Working. It boasts the latest convenience features Resettable circuit breakers in lieu of fuses and onebutton setup of digital DMX addressing via a userfriendly LED panel, eliminating dipswitch settings.

Orders will be processed and dispatched within 24 hours after payment is clear. Items must be returned in original, as shipped condition with all original packaging. All known issues should be described in the listing description. Please check the fields highlighted in red. Currency. View cart for details. Learn more opens in a new window or tab This amount is subject to change until you make payment. For additional information, see the Global Shipping Program terms and conditions opens in a new window or tab This amount is subject to change until you make payment. For additional information, see the Global Shipping Program terms and conditions opens in a new window or tab Learn More opens in a new window or tab Learn More opens in a new window or tab Learn More opens in a new window or tab Learn More opens in a new window or tab Learn More opens in a new window or tab Learn More opens in a new window or tab The item may be missing the original packaging or The item includes original accessories. The item may be a factory second. See the sellers listing for full details and description.

Contact the seller opens in a new window or tab and request a shipping method to your location. Please enter a valid postal code. Please enter a number less than or equal to 1. All Rights Reserved. Nuestro sistema de seguridad de pagos encripta tu informacion durante la transmision de datos. No compartimos los datos de tu tarjeta de credito con vendedores externos, ni vendemos tu informacion a terceros. Si esto es un regalo, considera realizar el envio a una direccion diferente. Si esto es un regalo, considera realizar el envio a una direccion diferente. Remplazamos el articulo en caso de que este no sea reparable o reembolsamos el valor de articulo. Centro de Atencion a Clientes especializado para ti. Los documentos de los Programas de Proteccion se entregaran por correo electronico dentro de las 24 horas posteriores a la compra.

<http://www.adatechotomyon.net/wp-content/plugins/formcraft/file-upload/server/content/files/1628a234ca5ffa---canon-imagerunner-1023if-manual-download.pdf>

Remplazamos el articulo en caso de que este no sea reparable o reembolsamos el valor de articulo. Centro de Atencion a Clientes especializado para ti. Los documentos de los Programas de Proteccion se entregaran por correo electronico dentro de las 24 horas posteriores a la compra. Por favor, intentalo de nuevo mas tarde. Para navegar fuera de este carrusel, usa tu tecla de acceso rapido de encabezados para navegar hacia el encabezado siguiente o anterior. Intenta realizar tu busqueda nuevamente mas tarde. De todos modos, podra editar su pregunta o publicacion. In addition to multichannel DMX and Microplex dimming control, these units can also provide a standalone chaser function with 16 preprogrammed patterns. Para calcular la calificacion general por estrellas y el desglose porcentual por estrellas, no usamos un promedio simple. Nuestro sistema toma en cuenta cosas como lo reciente que es una calificacion y si el revisor compro el producto en Amazon. Tambien analiza las calificaciones para verificar su fiabilidad. One of the worst kinds of errors to have in a unit that you depend on. I own many of these leviton satellite dimmers, and I have not had this issue with any of the 5 pin versions. maybe just a coincidence but worth noting. Gracias por su comentario. Lo sentimos, no hemos podido registrar tu voto. Vuelva a intentarlo Gracias por su comentario. Vuelva a intentarlo Whenever power flickers, it seems to forget a bunch of settings which the others dont do. Takes lots of button mashing each time. Gracias por su comentario. Vuelva a intentarlo Even well within wattage specs, both units locked themselves to 100% and stopped responding to DMX at random interavals. Dont waste your time. Gracias por su comentario. Vuelva a intentarlo. The international shipping price includes all import fees with NO SURPRISE CHARGES and no additional fees upon delivery. We offer FREE shipping on all domestic orders. We use a selection of shipping services such as UPS, FedEx, USPS etc.

Local pickups and combined shipping options are not provided at this time. International customers please be aware that all of our items, unless otherwise stated, will only run on 120 volts. Please check to make sure your country complies with these specifications. Return You can return a product for up to 30 days from the date you purchased it. Any product you return must be in the same condition you received it and in the original packaging. Please keep the receipt. Payment We accept payment by any of the following methods PayPal Please pay as soon as possible after winning an auction, as that will allow us to post your item to you sooner. Feedback Customer satisfaction is very important to us. If you have any problem with your order, please contact us and we will do our best to make you satisfied. Contact Us If you have any queries, please contact us via ebay. We usually respond within 24 hours on weekdays. Please visit our eBay store to check out other items for sale. Thank you for shopping at our store. Super high amount of views. 0 sold, 1 available. More Super high amount of views. 0 sold, 1 available. You are the light of the world. We also have a dimmable light controller Leviton D4DMXMD5 at the end of the daisychain of lights. I cant get the dimmer controller to work for the life of me Granted most of my expertise is in audio equipment but Im trying to learn as I go. I have everything set back to the factory settings on it, and as soon as i plug it in the first light in the chain changes color and stays the wrong color. Unplugging the

dimmer from the chain fixes the problem. Can anyone direct me on what setting to set it to to make it work correctly? The controller is set up with no chases, just scenes for each color Scene 1 for red, 2 for blue, etc And I want scene 8 to turn the lights attached to the dimmer on? What settings does the dimmer switch need to be on.

What about the lighting controller? Some cheap case Storage 250GB HDD Monitor Some NEC thing Keyboard Logitech G105 Mouse Some Microsoft mouse We also have a dimmable light controller Leviton D4DMXMD5 at the end of the daisy chain of lights. What about the lighting controller? Also I don't have an issue with the VS series. The system I was familiar with had like 24 channels and a dipless crossfade feature, but channel 23 and 24 were connected to the house lights which could be overridden at the stage or the front of house. You have to program the dimmer with what channels to listen on for the lighting controller to take it over. Then in the lighting controller you have to assign those addresses to channels. The system I was familiar with had like 24 channels and a dipless crossfade feature, but channel 23 and 24 were connected to the house lights which could be overridden at the stage or the front of house. You have to program the dimmer with what channels to listen on for the lighting controller to take it over. Then in the lighting controller you have to assign those addresses to channels. It makes the rest of the lights freak out change colors, turn off, etc. Some cheap case Storage 250GB HDD Monitor Some NEC thing Keyboard Logitech G105 Mouse Some Microsoft mouse Some cheap case Storage 250GB HDD Monitor Some NEC thing Keyboard Logitech G105 Mouse Some Microsoft mouse Hope you work it out. Also I don't have an issue with the VS series. By pushing enter below and using this site you assert to us that you are over the age of 13 or you are a minor with parental consent to use our site. Simple pushbutton DMX addressing. Versatile output channel selector lets you choose the exact number of channels you need. 16 Preprogrammed chase patterns with chase output level. Simple pushbutton DMX addressing. Rugged metal protective chassis. The sturdy metal chassis makes this rugged pack ideal for both stationary and portable applications.

Leviton D4DMXMD5 Programmable Dimmer Pack At a Glance Microplex and DMX15 protocol functionality in one compact dimming unit Available with DMX on 3pin or 5pin XLR receptacles One button setup of digital DMX addressing via a userfriendly LED panel Sturdy metal chassis make this a rugged pack ideal for stationery and portable applications Please make sure that you read and understand our terms before bidding!!! Shipping Free Shipping! This item will be shipped out within 1 day from the time payment is received. But usually we ship it Right Away! We will use your PayPal account address for shipping. If you want to use different address please let us know by eBay message system! We are currently only shipping to the lower 48 states. Sorry no international bids. We do not ship to PO Box. Only physical addresses. Payments For easy and fast transactions we accept PayPal only. In the unlikely event that the item may be sold out or back ordered we will refund your money. If you are not happy with your product please return it within 14 days after you received it, in original condition for a full refund. Please ask for instructions in case of return. If you have any problems with your item please contact us to make your purchase a perfect transaction. Please contact us by eBay message system before leaving neutral or negative feedback. Please contact us before leaving 13 Stars in Detailed Seller Ratings because it's considering as a low rating for eBay system. Your satisfaction is our Top Priority. Thank you for shopping with LegendaryStore. We value your business. Contact Information If you have any questions please contact us by eBay message system. You are the light of the world. We're trying to help you find exactly what you're looking for to keep you coming back. One unit can serve multiple purposes simp. It features an MC7008, which has 2 scene operation and is configurable to 8 individual channels with 8 submaster sliders. Other lengths are available, from 3 to 100 feet.

To see them, type NSCDMX5P in the main search window,. This is a 1632 channel Programmable Control Board. It is designed to meet the needs of the advanced lighting designer, with featu. It

provides footdriven, handsfree operation. It has userfriendly programmability, 2scene operation, pushbutto. It has dual co. It has dual co. It has a 20 button function keypad, programmable time fade presets and programmable bump buttons. It has dual control input. This Commercial series dimmer is 512 channel address capable. All operating controls are th. Try Google Search! Is the ground on power supply the common. Manual Intel D34010WYKH Mini PC NUC Kit BOXD34010WYKH Posted by sattaly 20200911 233601 Manual.Could someone please send me the link in an email or possibly send me the manual Thank you. Pdf for Flip Q Prompter People FlipQ Prompting Software Pro Upgrade SWFQUPGR Posted by Ankit Kumar 20200910 173434 Pdf software.

The fourchannel D4DMX The D4DMX is equipped with convenient circuit The D4DMX also provides The fullrange enclosure is equipped with two The VT4881ADP is a compact vented subwoofer enclosure Both boxes boast crossover, equalization, time Operators can The Waterfall 250 Pro features six colors plus The threechannel The fixture can also be The Waterfall carries a suggested retail price Both woofers High frequencies are delivered by a pair of 1inch This driver combination The system is Featuring dual engine New color and visual effects Users can also import The color wheel comes with four interchangeable The Fantasy is equipped with a 250W discharge The gobo and Like other fixtures in the American DJ Accu 250 Suggested retail pricing for the Fantasy Scan The new GEO D and GEO The GEO D features a 12inch woofer and two sidemounted The GEO Sub is equipped with one 18inch transducer Together, the cabinets produce a strong cardioid The enclosures The 20year industry The Wright Company and investors As of now this is the only large venue that caters It is a very beautiful club To have a club Big fans focused on highenergy They love to party Gabrielle "Dreams" Virginians, Frustration As Doctor Lecter said A thoroughly A nice slab of commercial. No schematic. However, the most common problem with these dimmer packs is a failure of the sermiconductor that controls the amount of power going out to the attached light. When this part fails, the output channel stops working, but the other 3 channels continue to work. Altho rarer, it is possible for multiple channel triacs to fail. The failure of a triac is typically due to 1 attached bulb filament failure in a manner where a filament fragment shorts across the mounting posts, 2 channel overload eg, plugging in a greater load significantly greater wattage than the D4DMX channel is rated for, 3 AC power line surge. The D4DMX series is also known for failures of its control cable interface circuitry, both for Microplex and DMX.

Microplex failures is more common, as that type of interface is more sensitive to induced noise from nearby AC wiring, radio signals, and standing wave reflections from varying lengths of control cabling. DMX uses a differential control signal interface, which makes it much more immune to induced noise, but it operates at a lower signal voltage which makes it more sensitive to accidental application of improper voltages on the control cable.which often happens when someone connects the DMX ports on the dimmer pack to a Microplex connector on another pack or the control console. One clue is to look at the single tiny LED right next to the control cable connectors; if its lit green, then the Microplex signal is detected, if its lit red the DMX signal is detected, if its not lit at all off then no signal is detected which just may be an interface circuit failure. Such problems are a bit more challenging to troubleshoot internally, and requires a proper oscilloscope or logic analyzer. In both of the above cases, you will see what may look normal on the LED display, but the dimmer pack will not function properly. You should describe more symptoms of your problem, such as Are all light output channels not working, or just 1 or 2 Which control interface are your using Microplex or DMX. What is your LED display saying. What are the present settings programmed into your D4DMX. Are any other working channels responding to the control console normally. Do you have any nonD4DMX dimmers in the control chain, and are they all connected using the same type of control interface Microplex or DMXAfter the restart you DVR default wizard will come up the same way like if you are setting up the DVR for the first time.Apr 16, 2015 Without that info it is most likely that one red wire is for the LED lights and the other is the camera sensor, the blacks are ground and the yellow is the video signal.But wont accept passcode.

<https://www.informaquiz.it/petrgenis1604790/status/flotaganis19052022-1654>